

SUSTAINABLE GROWTH FROM GEOLOGY



GTK
gtk.fi

Geological Survey of Finland

The Geological Survey of Finland (GTK) is a leading European competence centre for the assessment and sustainable use of geological resources. We provide expertise that serves the interests of our clients, stakeholders and society as a whole. Working closely with our clients and partners, we create solutions that lead to new technologies and business areas, while promoting sustainable growth.

GTK is an expert organisation under Finland's Ministry of Employment and the Economy. We operate nationally, and we are internationally active, as well.

For more information, please visit www.gtk.fi.

GTK in a nutshell

- Established in 1885
- Agency of Finland's Ministry of Employment and the Economy
- Expenditure €45.6 million (2016)
- Revenues €13.3 million (2016)
- Person-years worked 459.4 (2016)
- Staff with academic degrees 63.1% (2016)

At your service

We serve our customers and meet the challenges of sustainable development by identifying and inventorying mineral resources for developing material needs, and by offering solutions for environmental protection, energy use, infrastructure development and land use planning.

In addition to our diverse specialist services and our continuously developing digital services, we offer various laboratory and measurement services. Our mineral processing laboratory is among the best in Europe in the field of mineral enrichment.

We focus on understanding our customers and apply GTK's Quality System in all business operations.

Supporting sustainable growth

We create new technologies, applications and innovations to support sustainable development. We are proud that our operations have a solid research foundation, and are reliable and responsible.

www.gtk.fi

GTK's survey and research activities have generated a substantial amount of information on the Earth's crust and its natural resources. Our mission is to make this geological content and data easily accessible to the public, the scientific community, industry and society at large.

GTK has gathered its geological data into a one-search service. The Hakku service lets users search for and start using a range of geological data products. The service includes Finnish spatial data, documents and metadata from the 19th century to the present day. The products are divided into four categories: publications, reports, maps and posters; spatial data products; photographs; and map drawings. New products are being developed on a continuous basis. Most of the products are available for free. Most of the products are also available for further use as downloads or through an interface. The product selection also includes printed products that can be ordered separately, as well as observation and measurement data. The Hakku service can be found on GTK's website (www.gtk.fi) or directly at **hakku.gtk.fi**.

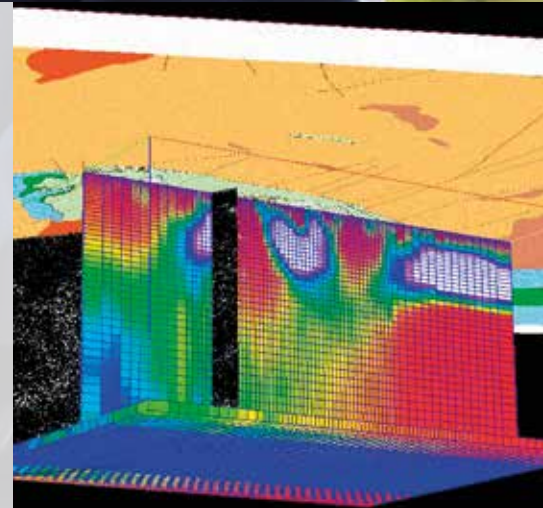


Soil surveys give information on e.g. soil formation, chemical characteristics and concentration of elements, as well as the effects of man's actions on soil characteristics.

Photo: GTK.

Geological 3D modelling illustrates the underground formations of soil and bedrock, such as rock types and their structures. The image shows the magnetic characteristics of the bedrock around the Vihanti zinc ore, as modelled with geophysical magnetic 3D inversion.

Photo: Eeva-Liisa Laine, GTK and Ilkka Suppala, GTK.



International cooperation

GTK is a well-known and respected partner in international research projects. We work in cooperation with, for example, international development funds as well as other organisations. GTK actively participates in cooperation in the minerals sector at European level. GTK is a member of EuroGeoSurvey (EGS).

Areas of scientific expertise and competence development

Sustainable mineral economics
Geoinformatics
Geomaterials and applied mineralogy
Mine and industrial environments
Hydrogeology
Geoenergy
Geoscientific city modelling
Geosciences for underground construction



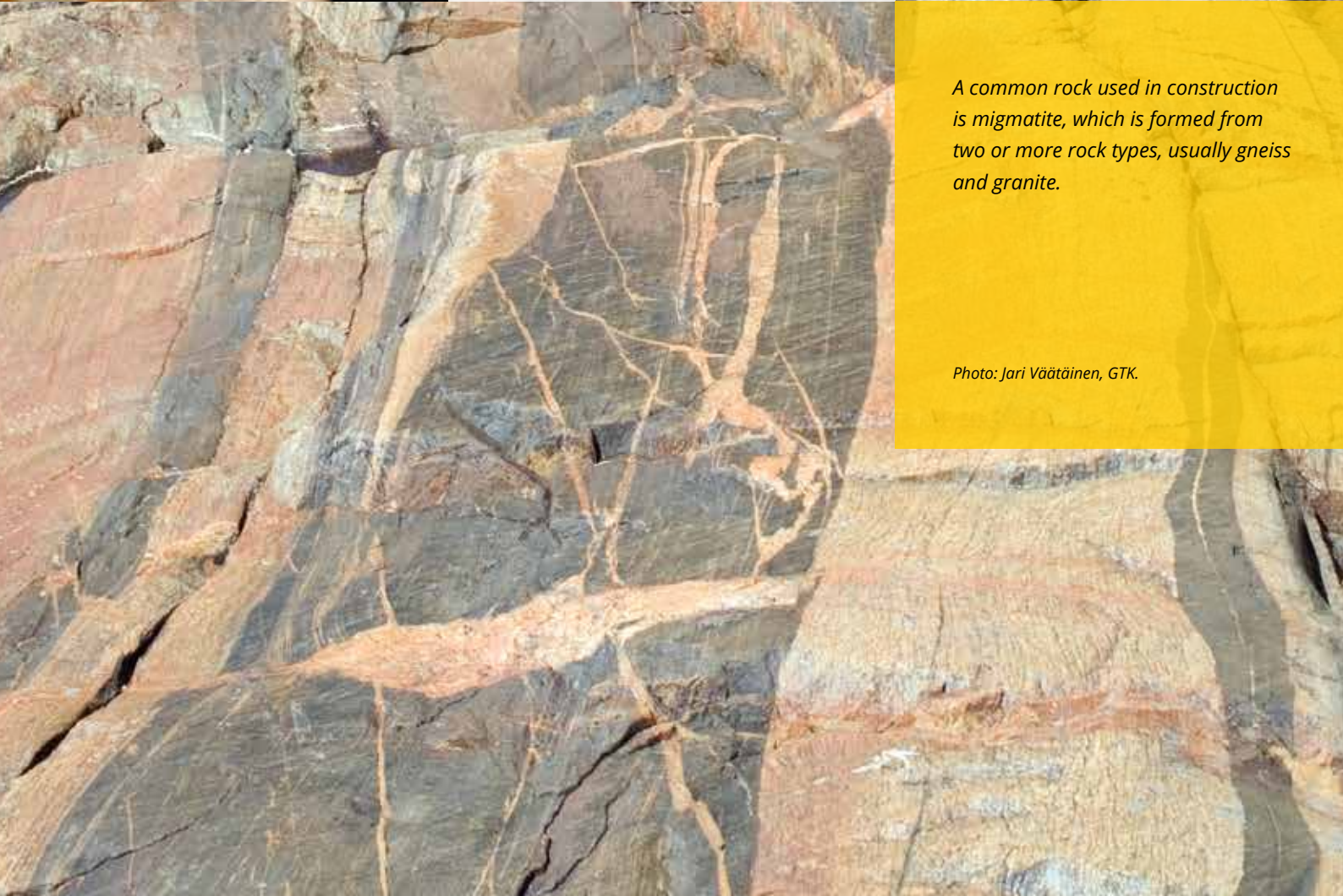
Ballast flints from the Mustikkamaa area in Helsinki. The flints have been carried to Finland with the soil used as ballast in sailing ships.

Photo: Kari A. Kinnunen, GTK.



A common rock used in construction is migmatite, which is formed from two or more rock types, usually gneiss and granite.

Photo: Jari Väättäin, GTK.



Contact information

Geological Survey of Finland

Tel. +358 29 503 0000

www.gtk.fi

Offices:

ESPOO

P.O. Box 96, FI-02151 Espoo, Finland

Visiting address: Betonimiehenkuja 4

KUOPIO

P.O. Box 1237, FI-70211 Kuopio, Finland

Visiting address: Neulaniementie 5

ROVANIEMI

P.O. Box 77, FI-96101 Rovaniemi, Finland

Visiting address: Lähteentie 2

KOKKOLA

GTK Innogate

P.O. Box 97, FI-67101 Kokkola, Finland

Visiting address: Teknologiakatu 7

OUTOKUMPU

Tutkijankatu 1,

FI-83500 Outokumpu, Finland

LOPPI DRILL CORE DEPOT

Mustinsuontie 159,

FI-12600 Läyliäinen, Finland