



Traffic connections from Helsinki:
Kamppi – Otaniemi:
busses 102, 103, 194, 195.

Eastern inner city: from Merihaka: bus 503 and busses 504, 505 and 506, from Malmi bus 512.

Connections from Espoo and Vantaa: bus 510 from Western Vantaa, from Espoo, Tapiola: busses 2, 4, 10, 15 and 194, 195, 503, 504, 505, 510, 512.



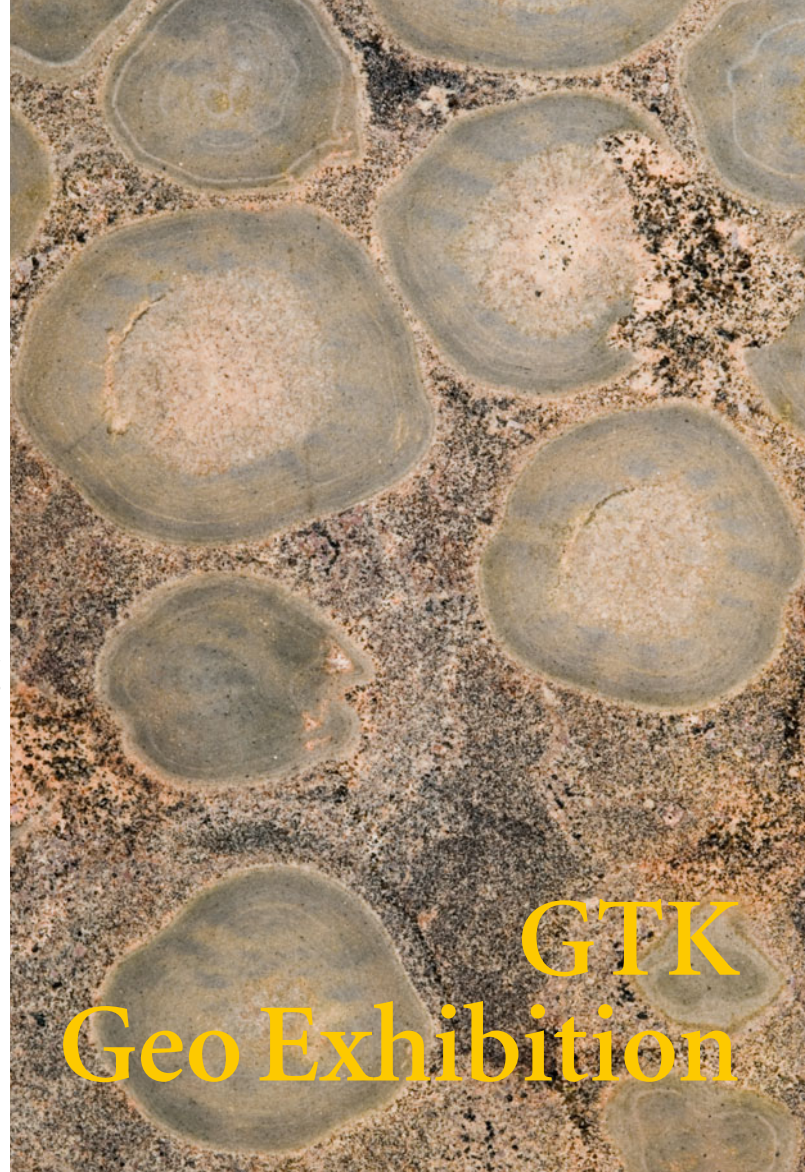
The Geo Exhibition shows replicas of the largest gold nuggets found in Lapland.

Please send your stone sample to GTK for investigation. All received material, soil, and stone samples will be investigated, and research results will be delivered to the sender in a letter. Find out more at www.gtk.fi

Layman's sample office contact details
GTK, Eastern Finland Office, Layman's sample office (kansannäytetoimisto), Tunnus 5003687, 70003 Vastauslähetyt

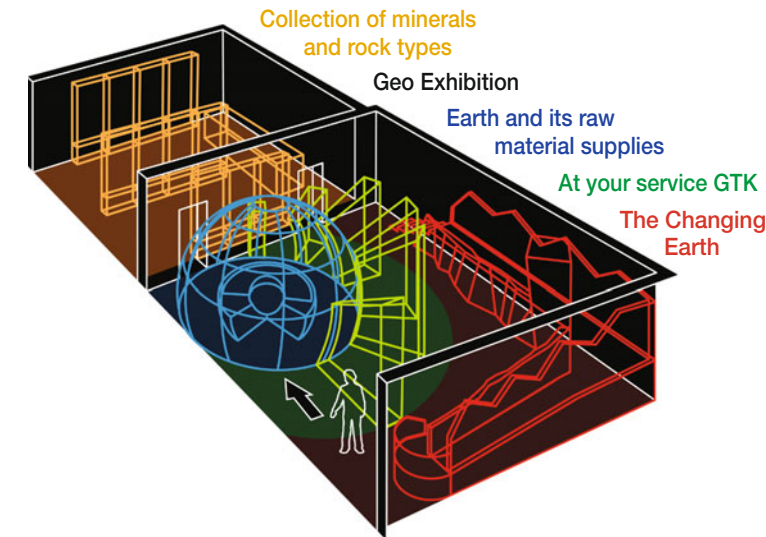
Contact details:
Geological Survey of Finland
Betonimiehenkuja 4
02150 Espoo, Otaniemi, Finland
Telephone +358 20 550 11
www.gtk.fi

Avenue / Erweko 2008. Brochure photos and drawings by GTK.



GTK
Geo Exhibition

Cover image: An orbicular rock, Savitaipale



At your service

GTK is governed by the Finnish Ministry of Employment and the Economy

- Established in 1887
- 720 employees
- Active international operations
- Mission
 - Surveys and investigates the Earth's crust and its natural resources
 - Responsible for a national information service in the field
 - Provides services required by its customers
 - Participates actively in international networks and projects.

Geo Exhibition

The Geo Exhibition deals with the geological development of Earth, from its early history to recent times. A collection of minerals and rock types provides an extensive introduction of their diversity. Poster and video presentations supplies information on the various services of GTK.

The Changing Earth

What series of events have shaped the surface and core of Earth? How has Earth developed to its current state during its 4,500 million years of revolving around the Sun as a solid sphere? The Geo Exhibition shows a piece of the Moon, i.e., a moonstone weighing one gram, which the Apollo XVII

mission picked up from the Taurus Littrow valley back in 1972. The oldest rock in Finland is 3,500 million years old, and is a gneiss from Siurua, Pudasjärvi.

- Tectonic plate movement and the origin of rock types
- Volcanic activity
- The geological evolution of Finland after the Ice Age

Earth and its raw material supplies

Most of our utilities have been manufactured by using geological resources of the Earth's crust. The yellow major showcase in the Geo Exhibition provides quick and easy button access to information on products made of raw materials sourced from the Earth's crust.

Collection of minerals and rock types

Mineral groups

- Elements, sulphides, halogenides, oxides and hydroxides, carbonates, phosphates, silicates, etc.

Rock types

- Magmatic, metamorphic and sedimentary rocks, fossils
- Ores, Lappish gold, industrial minerals and rocks
- Kimberlites; molten rock containing diamonds, erupts through the Earth's crust like a volcano and forms kimberlite pipes

- Orbicular rocks, rare and peculiar magmatic rock modifications
- Granite, the national rock of Finland, provincial stones

Precious stones and gemstones

- A collection of gemstones including over 800 samples from Finland and abroad. The samples have been donated by Tauno Paronen, master goldsmith and gemmologist
- Our best-known gemstones include the Ylämaa spectrolite and the Luumäki beryl.

